

**CORNICE SOPRAPENSILE**

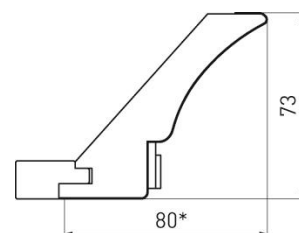
Cornice soprapensile in MDF classe E1 impiallacciata frassino spazzolato laccato poliuretano a poro aperto; greca in legno massiccio di frassino.

**UPPER CORNICE**

Upper cornice in MDF class E1 veneered in ash, brushed and painted open-grain, with polyurethane paint; decoration in solid wood ash.

**OBERE KRANZLEISTE**

Obere Kranzleiste in MDF furniert in Esche, geschwabbelt und lackiert offenporig mit Polyurethan Lack; Dekoration in Massivholz Esche.



**CORNICE SOTTOPENSILE**

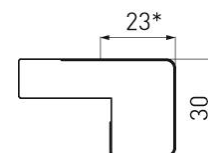
Cornice sottopensile in MDF classe E1 impiallacciata frassino spazzolato laccato poliuretano a poro aperto.

**UPPER CORNICE**

Under cornice in MDF class E1 veneered in ash, brushed and painted open-grain, with polyurethane paint.

**UNTERE KRANZLEISTE**

Untere Kranzleiste in MDF furniert in Esche, geschwabbelt und lackiert offenporig mit Polyurethan Lack.



**ZOCCOLO**

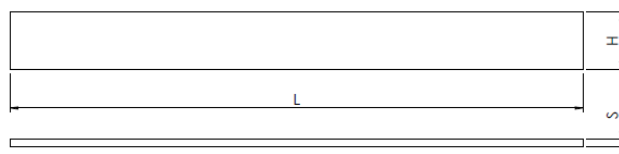
Zoccolo H 10-15 cm in MDF classe E1 impiallacciato frassino spazzolato e laccato poliuretano a poro aperto.

**UPPER CORNICE**

Plinth H 10-15 cm in MDF class E1 veneered in ash brushed and polyurethane painted open grain.

**OBERE KRANZLEISTE FURNIERT**

MDF Sockel H 10-15 cm furniert in Esche geschwabbelt und Polyurethan lackiert offenporig.



**GIUNZIONE 90° PER LATERALE ESTERNA**

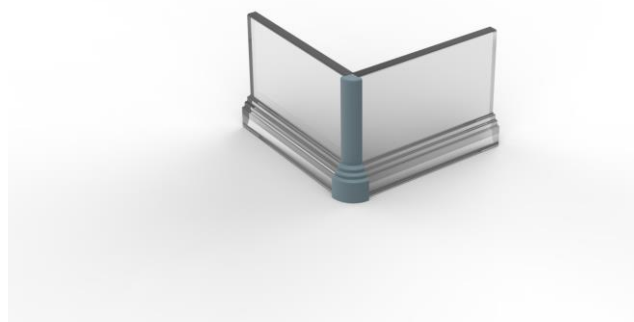
Giunzione 90° per laterale esterna H 10-15.

**90° JUNCTION FOR EXTERNAL SIDE**

90° junction for external side H 10-15.

**90° VERBINDUNG FUER AUSSERE SEITE**

90° verbindung fuer aussere seite H 10-15.



**GIUNZIONE 90° PER LATERALE INTERNA**

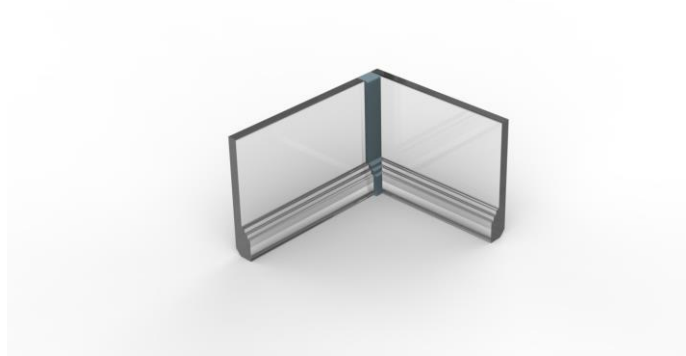
Giunzione 90° per laterale interna H 10-15.

**90° JUNCTION FOR INTERNAL SIDE**

90° junction for internal side H 10-15.

**90° VERBINDUNG FUER INNERE SEITE**

90° verbindung fuer innere seite H 10-15.



**GIUNZIONE LINEARE/TERMINALE**

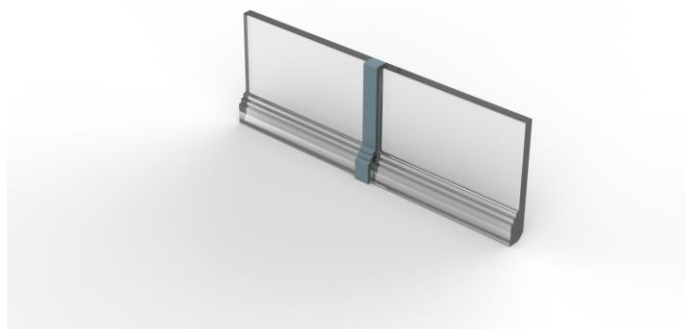
Giunzione lineare/terminale H 10-15.

**LINEAR JUNCTION/END**

Linear junction/end H 10-15.

**LINEAR VERBINDUG**

Linear verbindug H 10-15.



**PANNELLO/FIANCO IN TINTA**

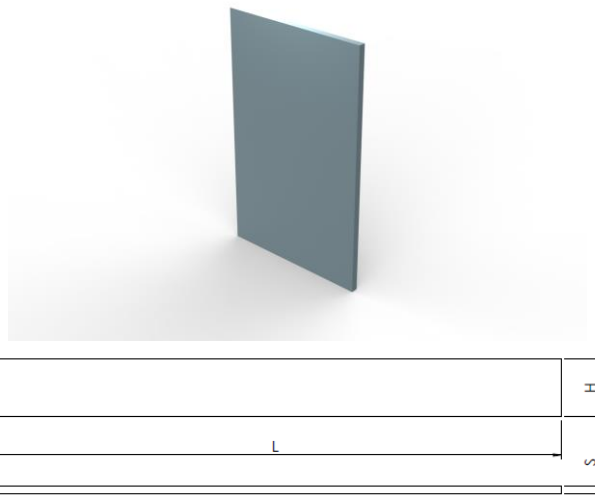
Pannello/fianco in tinta spessore 18 mm.

**PANEL/SIDE SAME COLOR**

Panel/side same color thickness 18 mm.

**PANEEL/SEITE IN GLEICHER FARBE STAERKE**

Paneel/seite in gleicher farbe staerke 18 mm.



**MONTANTE ANGOLO INTERNO**

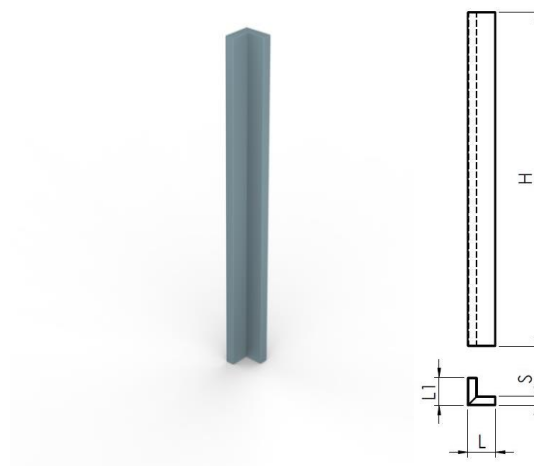
Montante angolo 87x87, H 717.

**INTERNAL CORNER POST**

Corner post 87x87, H 717.

**INNERE ECKE PASSTUECK**

Innere ecke passtueck 87x87, H 717.



**MENSOLA**

Mensola profondità 15-24-33-40-60 cm.

**SHELF**

Shelf depth 15-24-33-40-60 cm.

**REGAL**

Regal Tiefe 15-24-33-40-60 cm.

