

CORNICE SOPRAPENSILE

Cornice soprapensile in MDF classe E1 impiallacciata, greca in legno massiccio di frassino.

Disponibile nelle versioni: impiallacciato laccato opaco tinta unita.

UPPER CORNICE

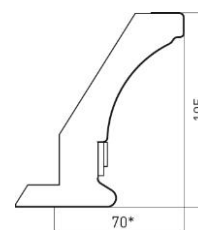
Upper cornice in MDF class E1 veneered, decoration in solid ash.

Available in matt painted solid color.

OBERE KRANZLEISTE

Obere Kranzleiste in MDF furniert, Dekoration in Massivholz Esche.

Farben: matt lackiert.



CORNICE SOTTOPENSILE

Cornice sottopensile in MDF classe E1 impiallacciata.

Disponibile nelle versioni: impiallacciato laccato opaco tinta unita.

UPPER CORNICE

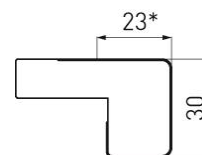
Under cornice in MDF class E1 veneered.

Available in matt painted solid color.

UNTERE KRANZLEISTE

Untere Kranzleiste in MDF furniert.

Farben: matt lackiert.



ZOCCOLO

Zoccolo H 10-15 cm in MDF classe E1 impiallacciato toulipie.

Disponibile nella versione laccato opaco tinta unita.

UPPER CORNICE

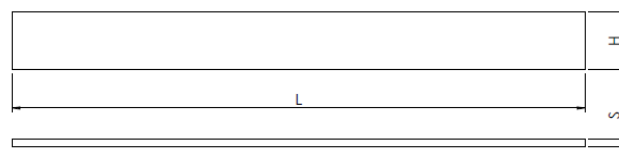
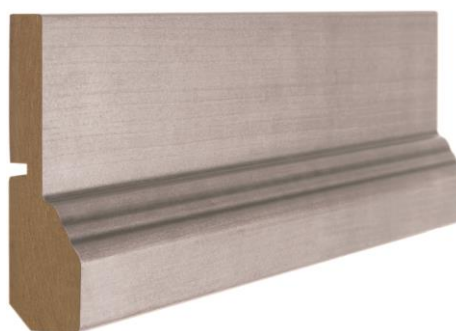
Plinth H 10-15 cm in MDF class E1 veneered in toulipie.

Available in matt painted solid color.

OBERE KRANZLEISTE FURNIERT

MDF Sockel H 10-15 cm furniert in Toulipie.

Farben: Kirschbaum.



GIUNZIONE 90° PER LATERALE ESTERNA

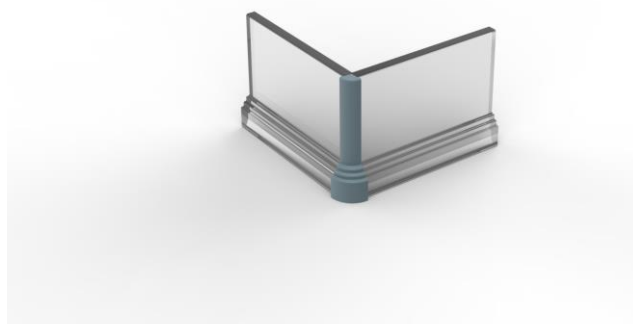
Giunzione 90° per laterale esterna H 10-15.

90° JUNCTION FOR EXTERNAL SIDE

90° junction for external side H 10-15.

90° VERBINDUNG FUER AUSSERE SEITE

90° verbindung fuer aussere seite H 10-15.



GIUNZIONE 90° PER LATERALE INTERNA

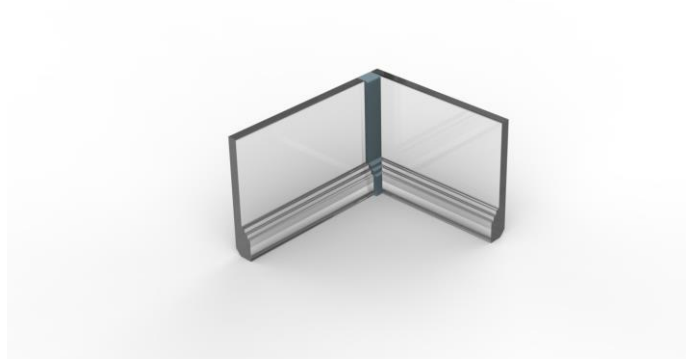
Giunzione 90° per laterale interna H 10-15.

90° JUNCTION FOR INTERNAL SIDE

90° junction for internal side H 10-15.

90° VERBINDUNG FUER INNERE SEITE

90° verbindung fuer innere seite H 10-15.



GIUNZIONE LINEARE/TERMINALE

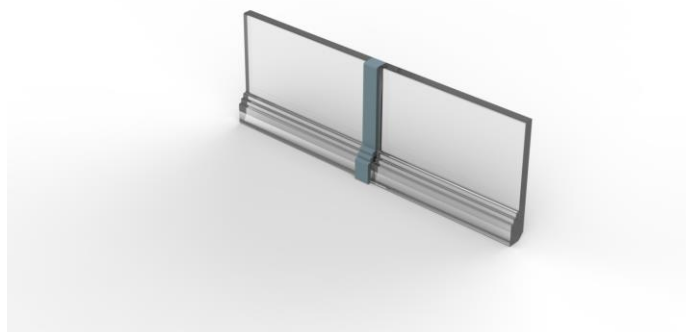
Giunzione lineare/terminale H 10-15.

LINEAR JUNCTION/END

Linear junction/end H 10-15.

LINEAR VERBINDUG

Linear verbindug H 10-15.



PANNELLO/FIANCO IN TINTA

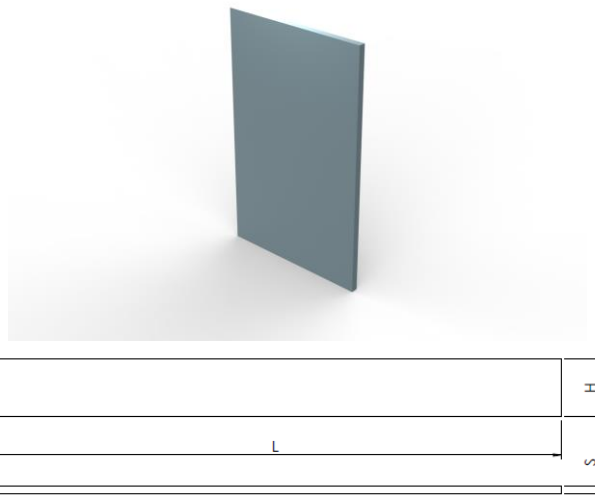
Pannello/fianco in tinta spessore 18 mm.

PANEL/SIDE SAME COLOR

Panel/side same color thickness 18 mm.

PANEEL/SEITE IN GLEICHER FARBE STAERKE

Paneel/seite in gleicher farbe staerke 18 mm.



MONTANTE ANGOLO INTERNO

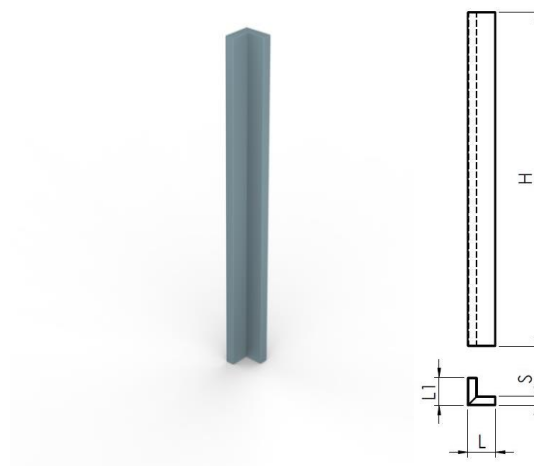
Montante angolo 87x87, H 717.

INTERNAL CORNER POST

Corner post 87x87, H 717.

INNERE ECKE PASSTUECK

Innere ecke passtueck 87x87, H 717.



MENSOLA

Mensola profondità 15-24-33-40-60 cm.

SHELF

Shelf depth 15-24-33-40-60 cm.

REGAL

Regal Tiefe 15-24-33-40-60 cm.

