

CORNICE SOPRAPENSILE

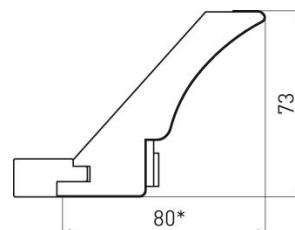
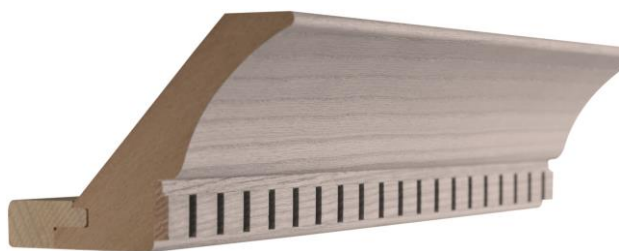
Cornice soprapensile in MDF classe E1 impiallacciata frassino spazzolato laccato poliuretano a poro aperto; greca in legno massiccio di frassino.

UPPER CORNICE

Upper cornice in MDF class E1 veneered in ash, brushed and painted open-grain, with polyurethane paint; decoration in solid wood ash.

OBERE KRANZLEISTE

Obere Kranzleiste in MDF furniert in Esche, geschwabbelt und lackiert offenporig mit Polyurethan Lack; Dekoration in Massivholz Esche.



CORNICE SOTTOPENSILE

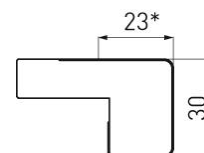
Cornice sottopensile in MDF classe E1 impiallacciata frassino spazzolato laccato poliuretano a poro aperto.

UPPER CORNICE

Under cornice in MDF class E1 veneered in ash, brushed and painted open-grain, with polyurethane paint.

UNTERE KRANZLEISTE

Untere Kranzleiste in MDF furniert in Esche, geschwabbelt und lackiert offenporig mit Polyurethan Lack.



ZOCCOLO

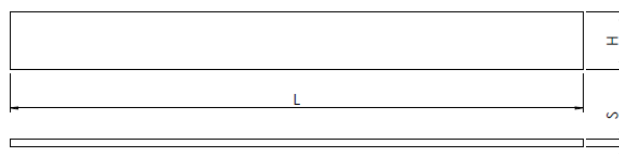
Zoccolo H 10-15 cm in MDF classe E1 impiallacciato frassino spazzolato e laccato poliuretano a poro aperto.

UPPER CORNICE

Plinth H 10-15 cm in MDF class E1 veneered in ash brushed and polyurethane painted open grain.

OBERE KRANZLEISTE FURNIERT

MDF Sockel H 10 cm furniert in Esche geschwabbelt und Polyurethan lackiert offenporig.



GIUNZIONE 90° PER LATERALE ESTERNA

Giunzione 90° per laterale esterna H10-15.

90° JUNCTION FOR EXTERNAL SIDE

90° junction for external side H 10-15.

90° VERBINDUNG FUER AUSSERE SEITE

90° verbindung fuer aussere seite H 10-15.



GIUNZIONE 90° PER LATERALE INTERNA

Giunzione 90° per laterale interna H 10-15.

Versioni: noce, avena, frassino bianco, panna fiorentino, malto.

90° JUNCTION FOR INTERNAL SIDE

90° junction for internal side H 10-15.

Colors: walnut, oatmeal, white ash, Florence cream, malto.

90° VERBINDUNG FUER INNERE SEITE

90° verbindung fuer innere seite H 10-15.

Farben: nussbaum, Hafer, Florenz cremefarben, weiß, malto.



GIUNZIONE LINEARE/TERMINALE

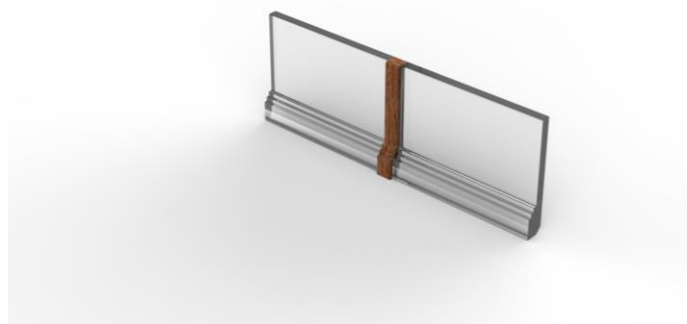
Giunzione lineare/terminale H 10-15.

LINEAR JUNCTION/END

Linear junction/end H 10-15.

LINEAR VERBINDUG

Linear verbindug H 10-15.



PANNELLO/FIANCO IN TINTA

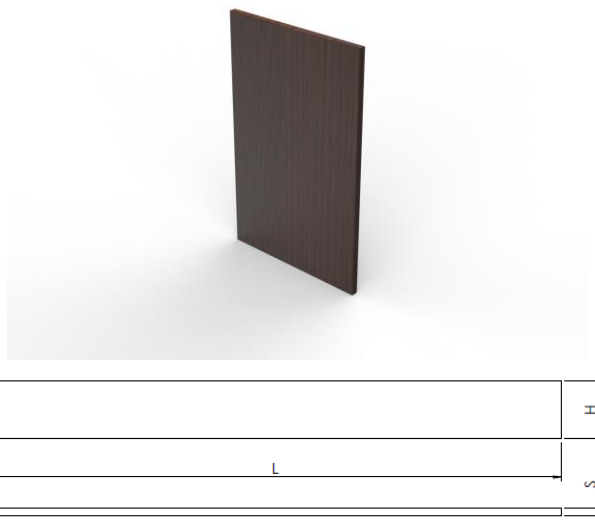
Pannello/fianco in tinta spessore 18 mm.

PANEL/SIDE SAME COLOR

Panel/side same color thickness 18 mm.

PANEEL/SEITE IN GLEICHER FARBE STAERKE

Paneel/seite in gleicher farbe staerke 18 mm.



MONTANTE ANGOLO INTERNO

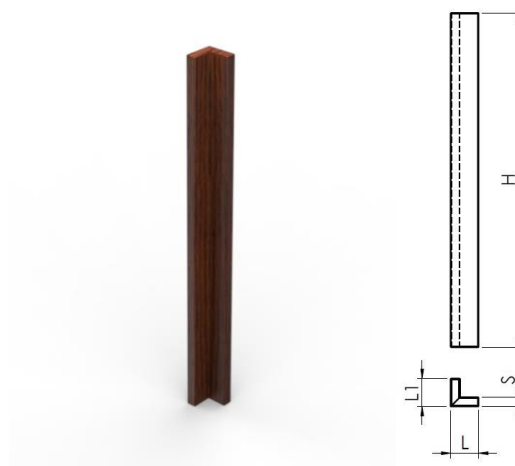
Montante angolo 87x87, H 717.

INTERNAL CORNER POST

Corner post 87x87, H 717.

INNERE ECKE PASSTUECK

Innere ecke passtueck 87x87, H 717.



MENSOLA

Mensola profondità 15-24-33-40-60 cm.

SHELF

Shelf depth 15-24-33-40-60 cm.

REGAL

Regal Tiefe 15-24-33-40-60 cm.

